

**This visual story is intended to help prepare you for your visit to Sadler's Wells East for My First Ballet: Cinderella.**



This is one of the main entrances to Sadler's Wells East which is located on Stratford Walk, Queen Elizabeth Olympic Park, London.



This is the first entrance you'll see walking from Stratford Westfields.  
You'll enter through these glass doors which open out to the Café,  
The Well.



This is The Well. You can relax here before, during and after the show and buy snacks and drinks at the bar.

You can also refill your water bottle at our water station, we have cups you can borrow too.



You might also like to enter through these glass doors. This entrance is what you'll see if you walk from West Ham Stadium.

There is a ramp to this entrance.



You will enter the Foyer and see the Welcome Desk.

This is where you may come to buy or collect your tickets for the show, and where the Sadler's Wells East team can answer any questions, you might have.

You can also buy some merchandise from the shop.

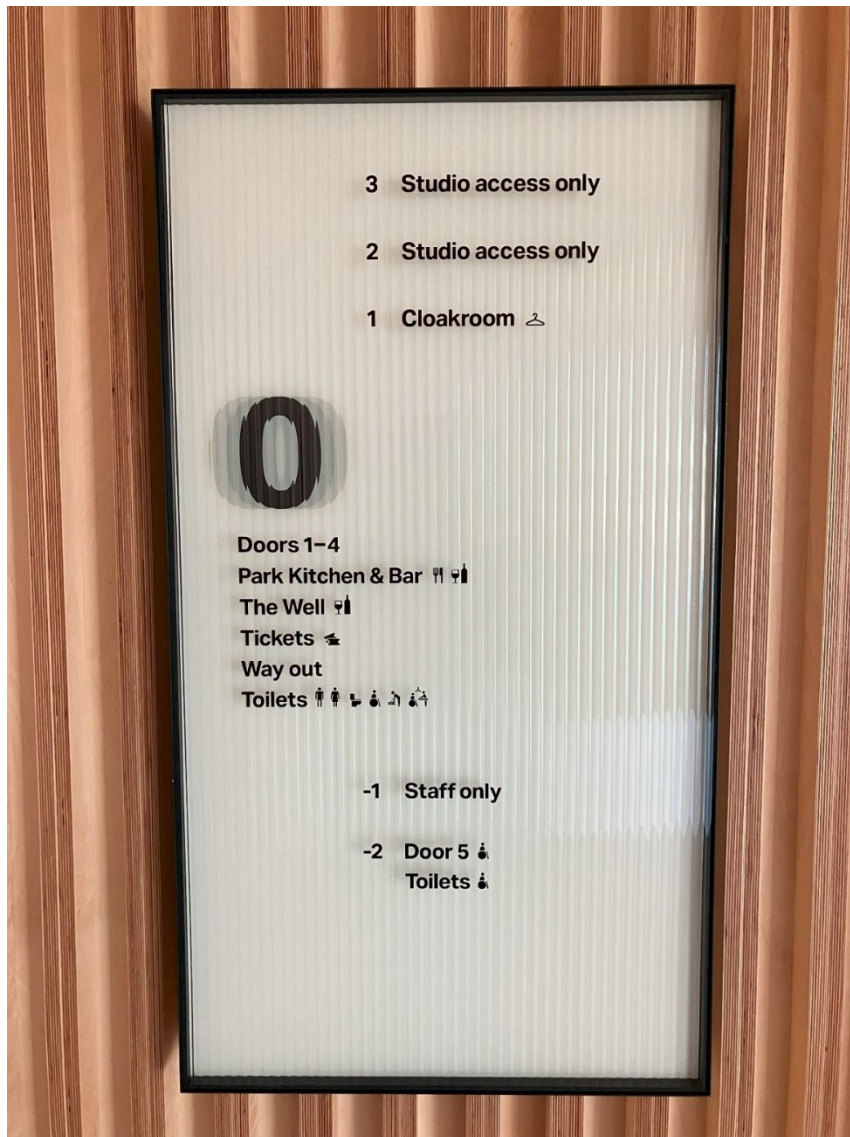


To the right of the Welcome Desk is the restaurant and bar, The Park. You can buy a snack, drink or sit down for a meal before, during or after the show.

There is another water station with cups here.



All of the front of house spaces are connected by The Dance Floor.  
You might see people dancing and hear music here.  
It might be busy and a bit noisy before and after the show.



On the ground floor, marked 0, Sadler's Wells East have a range of toilets:

- A female toilet with cubicles and baby change facilities
- A male toilet with urinals, cubicles and baby change facilities
- Two accessible, all gender toilets – one with baby change facilities
- One changing place toilet which has an accessible toilet, adjustable changing and shower table, electric hoist and adjustable sink - please bring your own sling if you wish to use the hoist



Members of our front of house team will operate the lift if you need step free access the auditorium via level -2, the chill-out space on level 2 or our cloakroom on level 1.



The chill-out space will be in a place called The Foyle Studio. It will have bean bags, fidget toys, information booklets about the show and a live stream of the performance on a large TV screen, so you can experience the show in a different way. The lights will be dimmed, and it will be quiet.

For the relaxed performance, you can exit and re-enter the auditorium as many times as you need. The chill-out space will be open from 14:15 until the show ends.



On level 1 Sadler's Wells East have a cloakroom where you are welcome to leave your bags and belongings for a small fee.

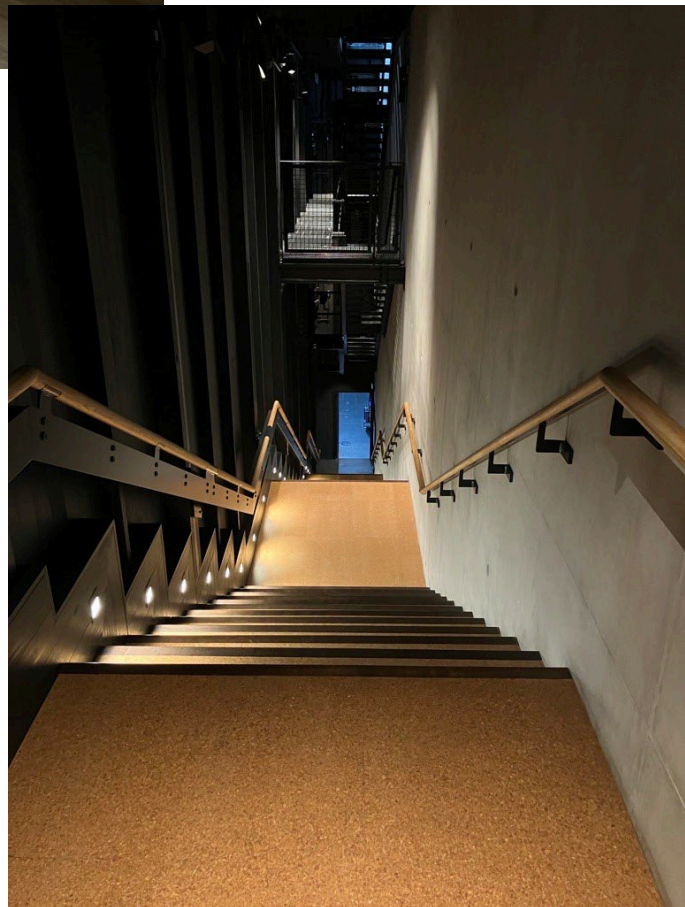


The auditorium doors are either side of The Well Café on level 0.

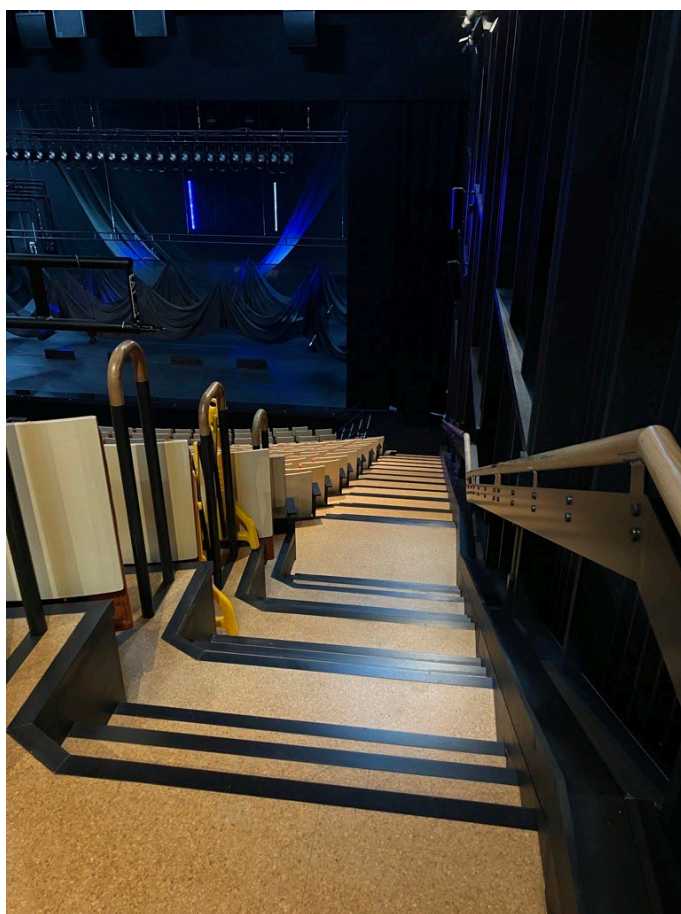


Your tickets will be checked by a front of house member at the entrance to the auditorium, your ticket will tell you which door is best to use.

These are the stairs you might take if you are seated in rows AA-G.



These are the stairs you might take if you are seated in Rows H-R.





Seating for this performance is allocated; Sadler's Wells East ushers will check your ticket and help you find your seat. Your seat number is on your ticket.

The house lights will be on at a dimmed level, so you can leave and enter the auditorium safely whilst the performance is happening.

**We hope you enjoy the show!**