

Dorfman
Foyer



English
National
Ballet

Studios & Event Space
at London City Island

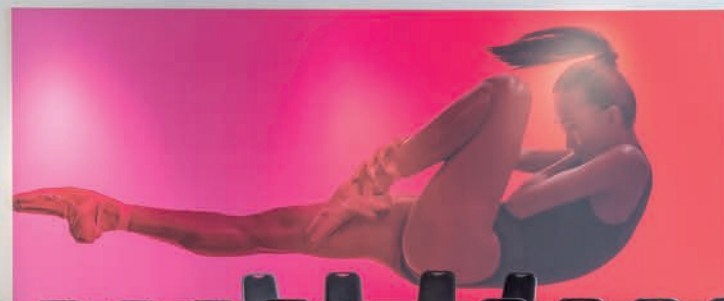
About English National Ballet at London City Island

This state-of-the-art building is home to English National Ballet and offers production, rehearsal and event facilities, just a 5 minute tube journey from Canary Wharf and with easy vehicular access from the A13. With a Production Studio including a full fly tower, 4 rehearsal studios and various other meeting and hospitality spaces, English National Ballet at London City Island offers creative spaces in which hirers can develop, create, share and promote their work and practice.

Spaces can be hired for:

- Technical & Production
- Meetings
- Training
- Product Launches
- Networking Events
- Rehearsals & Studio Performances
- Auditions





Space Specifications

Site Specifications



Holloway Production Studio

The Holloway Production Studio is a blank canvas and can be a productive technical theatre space, an engaging conference or training space, and can transform into magical hospitality spaces. With a full height fly tower and a stage space to match our largest theatres, the Holloway Production Studio offers a technical space in which to rehearse and produce performances. It is incredibly versatile and can also be used as a dining space, presentation and training venue and for showcasing brands and organisations.

Start from £4,000 pd | £15,000 pw

*all prices exclude VAT

Perfect for

Production rehearsals, conferences, dining events, product launches, fashion shows.

Size: 19m x 26m
Floor to top of Flytower 24.2m

Capacity: 750 standing
500 theatre
350 dining
300 cabaret

Dorfman Foyer and Holloway Production Studio used together - 1000 standing

Features

- Full height fly tower and access from loading bay
- Bleacher seating for 175 with more seating available according to preferred layout
- Space can be split into different segments e.g. presentation space & hospitality space or running wardrobe/company office space as well as stage area
- Grand piano

Linden Studio | Nureyev Studio Wall Studio | Markova Dolin Studio

Perfect for

Rehearsals, workshops, training sessions, conference breakout spaces, private performances, drinks receptions, filming and photography.

Size: 15 x 15 x 5.5m

Capacity: Linden Studio & Nureyev Studio

150 standing

75 seated

Markova Dolin Studio & Wall Studio

100 standing

50 seated

Features

- Piano in each studio
- Natural light from floor-ceiling windows
- Mirrors & ballet barres on 3-4 walls (can be covered)
- 55" Screen
- CD & DVD player; ipod
iphone dock
- Speakers

Start from £450 pd | £1,950 pw

*all prices exclude VAT

Bickle Room

Perfect for

Meetings, presentations, training sessions, drinks receptions.

Size: 5.4 x 11m

Capacity: 60 standing

30 seated

22 boardroom table

Features

- Can be opened to include the Mezzanine level for hospitality
- Full height windows with views across the river
- 82" Screen; HDMI connection
- CD & DVD player
- Wireless presentation gateway

Start from £400 pd

Site Specifications

Wigoder Gallery

Perfect for

Presentations, drinks receptions & social events, brand activation, networking, training sessions.

Size:	15 x 9m
Capacity:	75 standing
	100 classroom
	30 seated
	70 cabaret

Mezzanine and Collaboration Space used together 200 standing

Features

- Flexible space that can include the
- Collaboration Space for additional capacity
- Hire can include lighting and AV support

Start from £1,600 per day

Dorfman Foyer

Perfect for

Bespoke performances, drinks receptions, networking.

Size:	361sqm
Capacity:	600 standing
	300 watching a performance

Features

- Bespoke artwork on the walls
- Easily accessible, open space
- Feature staircase at the centre of the space

Start from £1,600 per day



Filming & photography fees

In the Holloway Production Studio or Rehearsal Studios, rates start from £800 for filming and £500 for photography per 3 hours.

In the Dorfman Foyer, Wigoder Gallery or non-dance spaces, rates start from £550 for filming and £300 for photography per 3 hours.

Site Specifications



Meeting Rooms

Perfect for

Meetings, small presentations.

Size: 5.6m x 3.4m or 5.5m x 5m

Capacity: Room 4 - seated 10
Room 3 - seated 4

Features

- Simple elegant interior design and furniture
- Presentation screen
- HDMI connection

Start from £400 per day

Roof Terrace

Perfect for

Drinks receptions, networking, social events.

Size: 15 x 7m

Capacity: 60 standing

Features

- Fantastic views across London City Island
- Stylish outdoor furniture

Start from £1,600 per day

Hospitality at ENB

We can provide a wide range of catering and hospitality options according to the needs of your event. From 4 course dinners to production catering, from our elegant canape menu to working lunches, we provide high quality food and drink that fits with your requirements.

There is free wifi throughout the building.

Evenings & weekend hire rates available on request.



English
National
Ballet



For further details, please contact:

T: 020 7581 1245

E: events@ballet.org.uk

© 2019 English National Ballet. All rights reserved.

Registered in England and Wales. No. 735040. Charity No. 214005 Registered office: 41 Hopewell Square, London E14 0SY